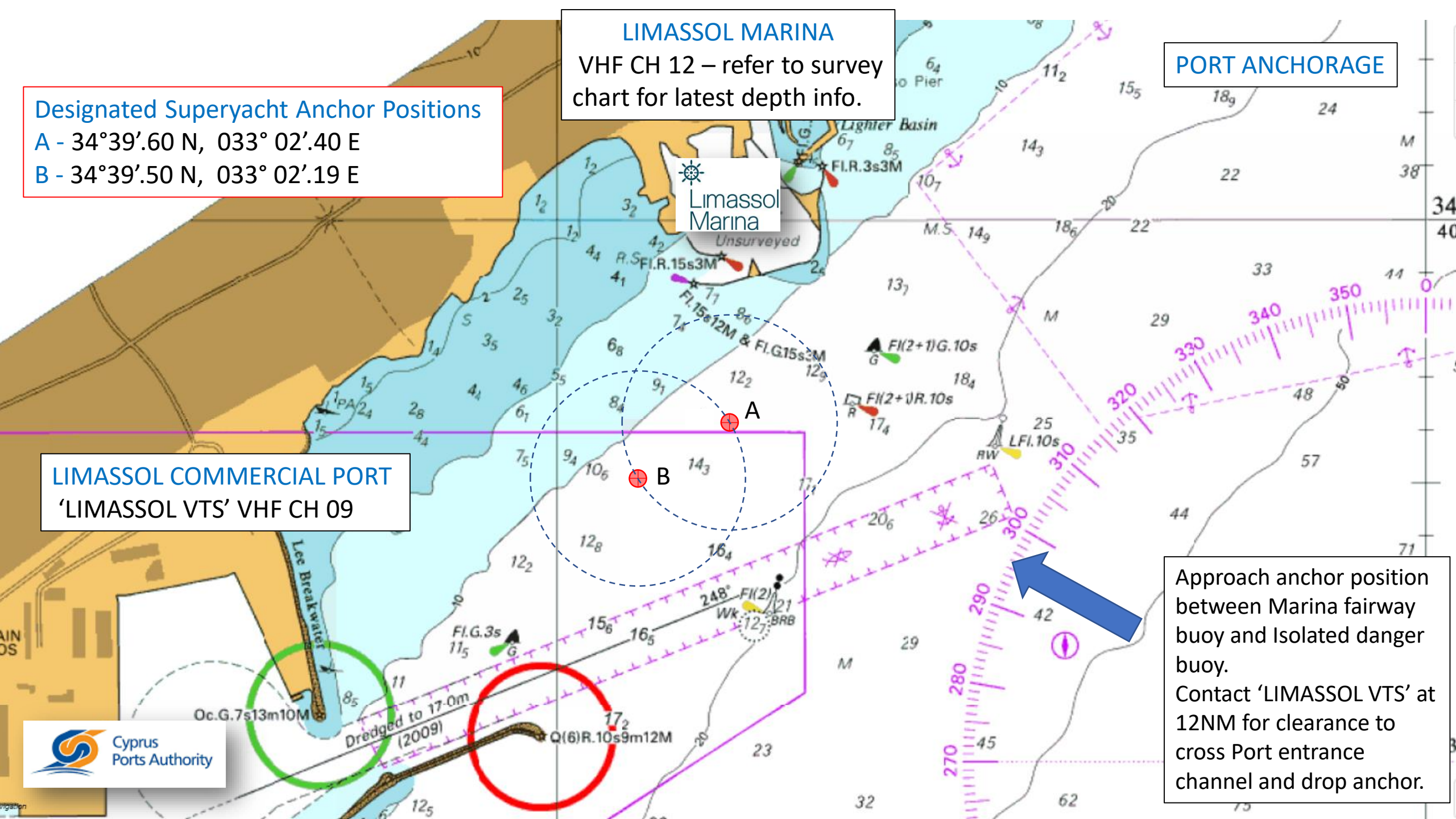


Designated Superyacht Anchor Positions
A - 34°39'.60 N, 033° 02'.40 E
B - 34°39'.50 N, 033° 02'.19 E

LIMASSOL MARINA
VHF CH 12 – refer to survey chart for latest depth info.

PORT ANCHORAGE

LIMASSOL COMMERCIAL PORT
'LIMASSOL VTS' VHF CH 09



Approach anchor position between Marina fairway buoy and Isolated danger buoy.
Contact 'LIMASSOL VTS' at 12NM for clearance to cross Port entrance channel and drop anchor.